

MARCH 26, 2024

---







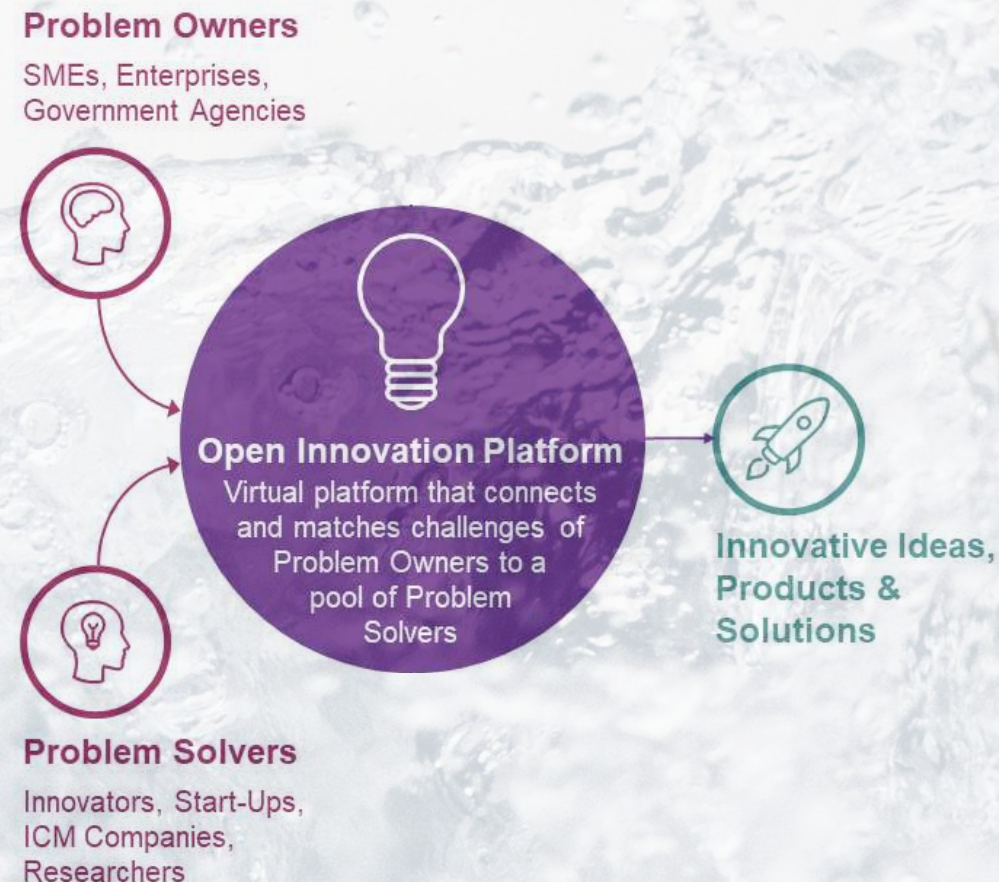
# DigiShape is een Open Innovatie Platform

## Versnellen van de digitale transformatie

DigiShape is een open innovatieplatform van bedrijven, kennisinstellingen en overheden die samen de potentie van digitalisering voor de watersector willen benutten.

## Toepasbaar maken van nieuwe kennis

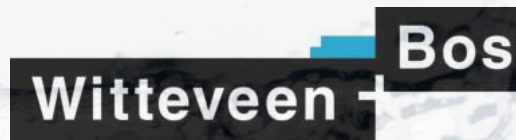
We werken samen aan concrete projecten, waarin we als een open community experimenteren met beschikbare data, nieuwe data en geavanceerde technieken.







# Wie maken DigiShape?

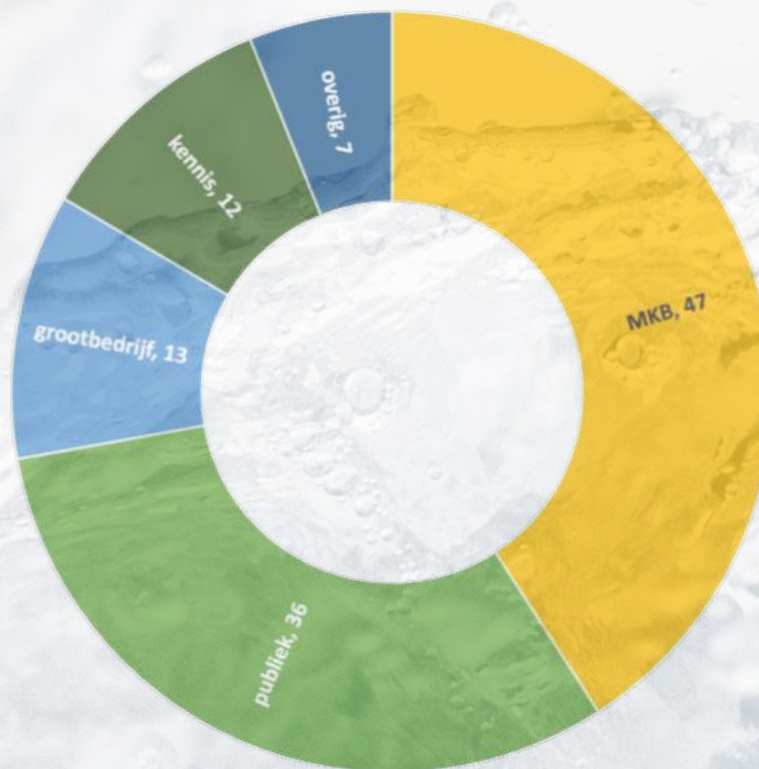






# De kracht van de community!

DigiShape community (150 organisaties)

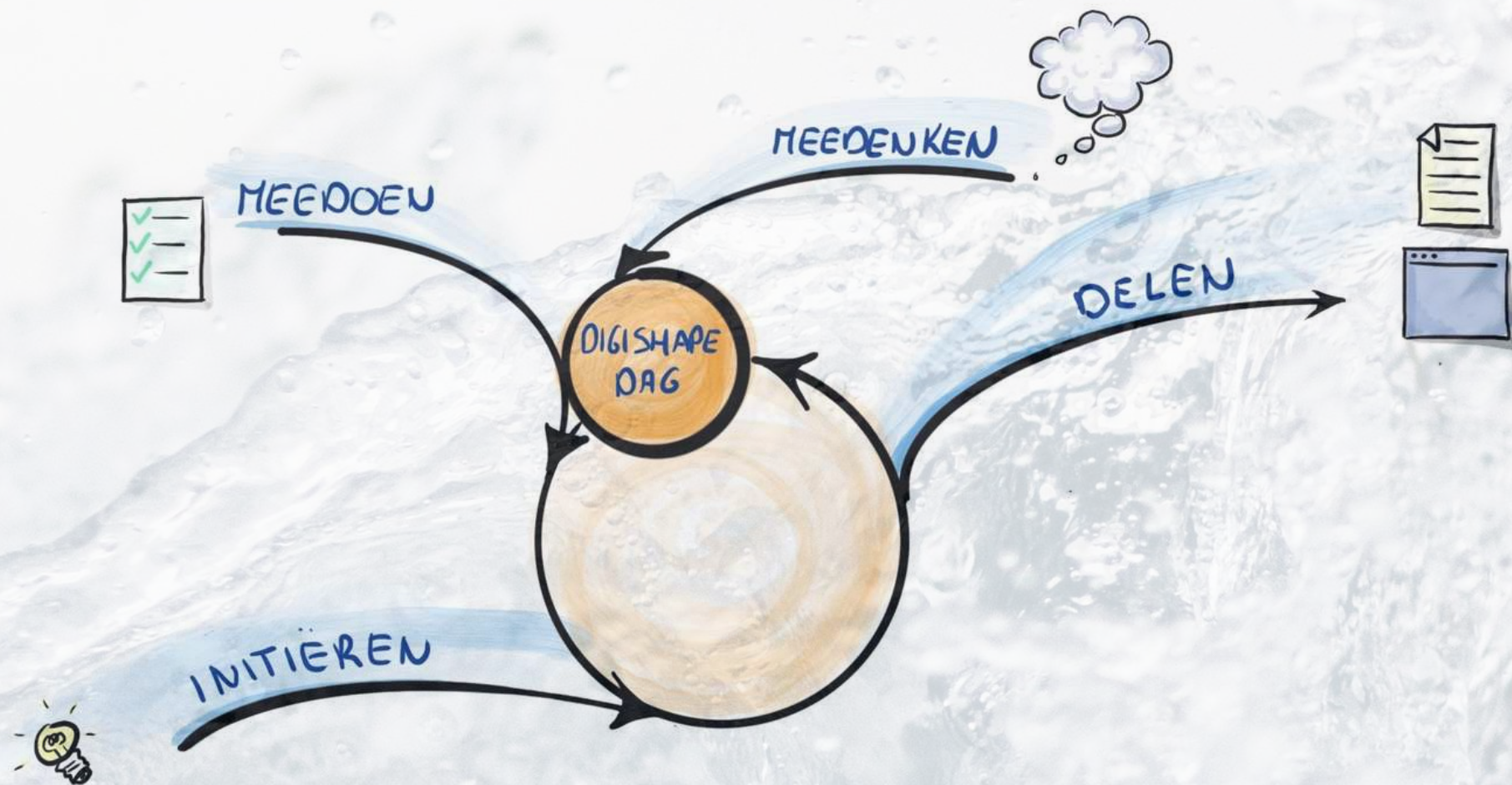


(25% niet-watersector)





# Hoe werkt DigiShape?





# Thematic areas



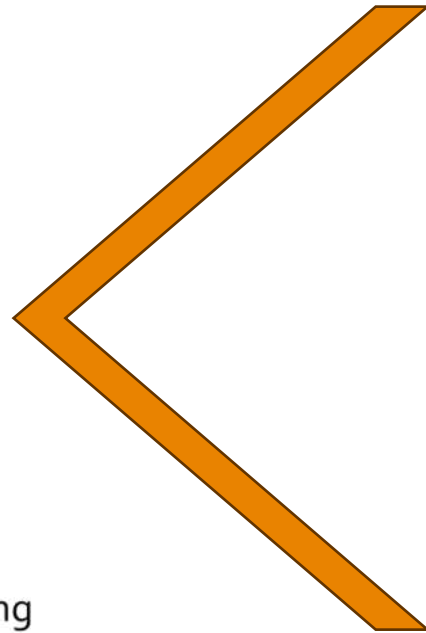
Water & Logistics



Watermanagement



North Sea spatial planning



## Precompetitive proposition (s)

- Experimental environment (living lab) with an open data for twinning tactical and operational models: a safe environment for developing novel solutions

## Sharing of models and data

- Datalake in which data from one or preferably multiple waterboards is brought together; open for experimentations. We bring the projects to the data.

## Strategic network expansion

- Waterboards (and/or STOWA, Waterschapshuis, IHW)
- Active involvement of AI partners through NL-AIC